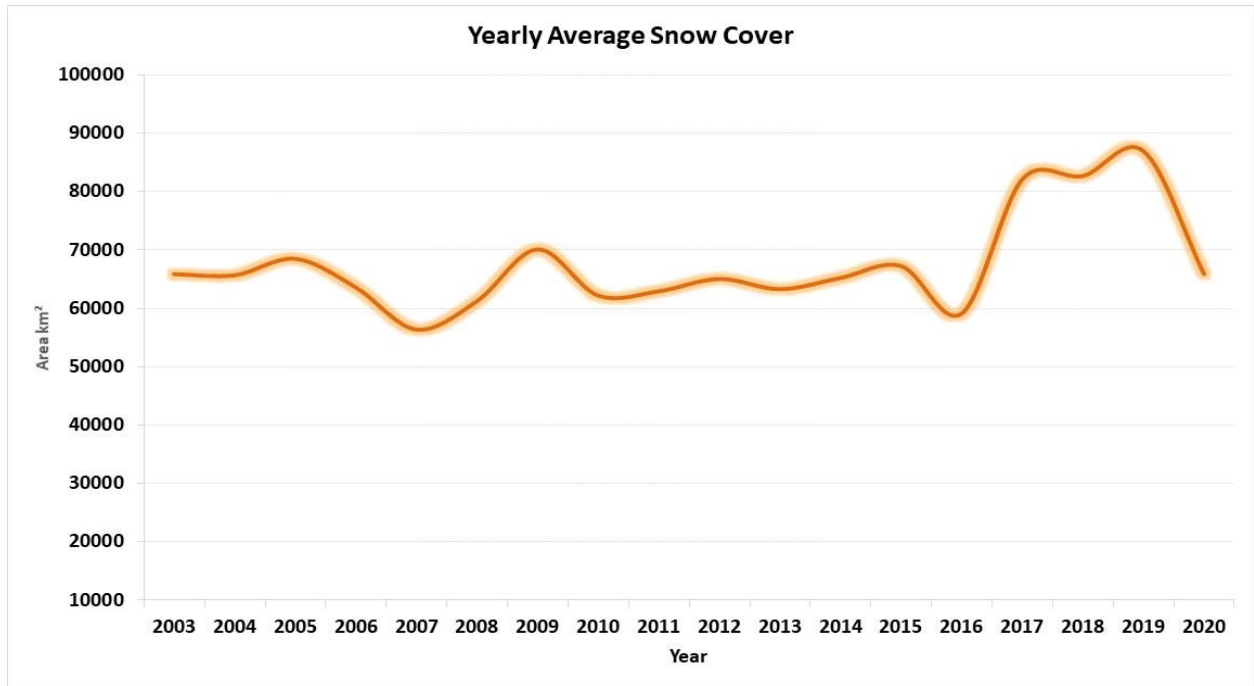
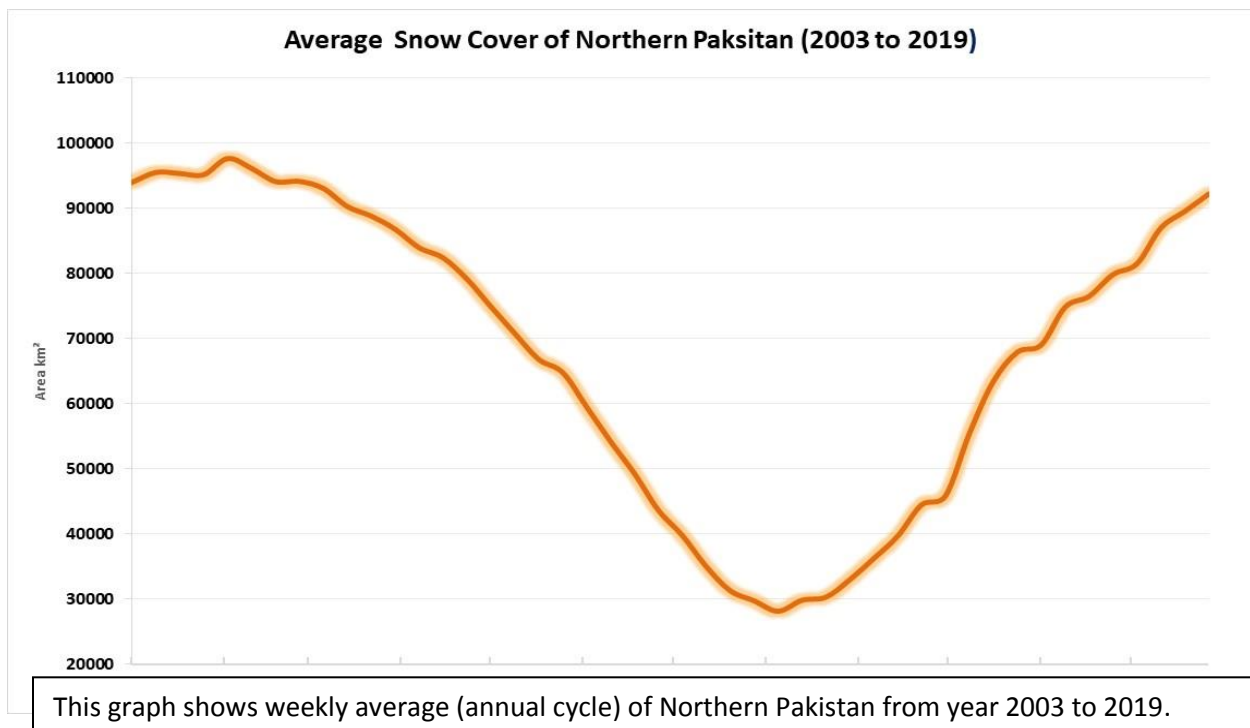


## Climate Change Indicators: Snow Cover of Pakistan

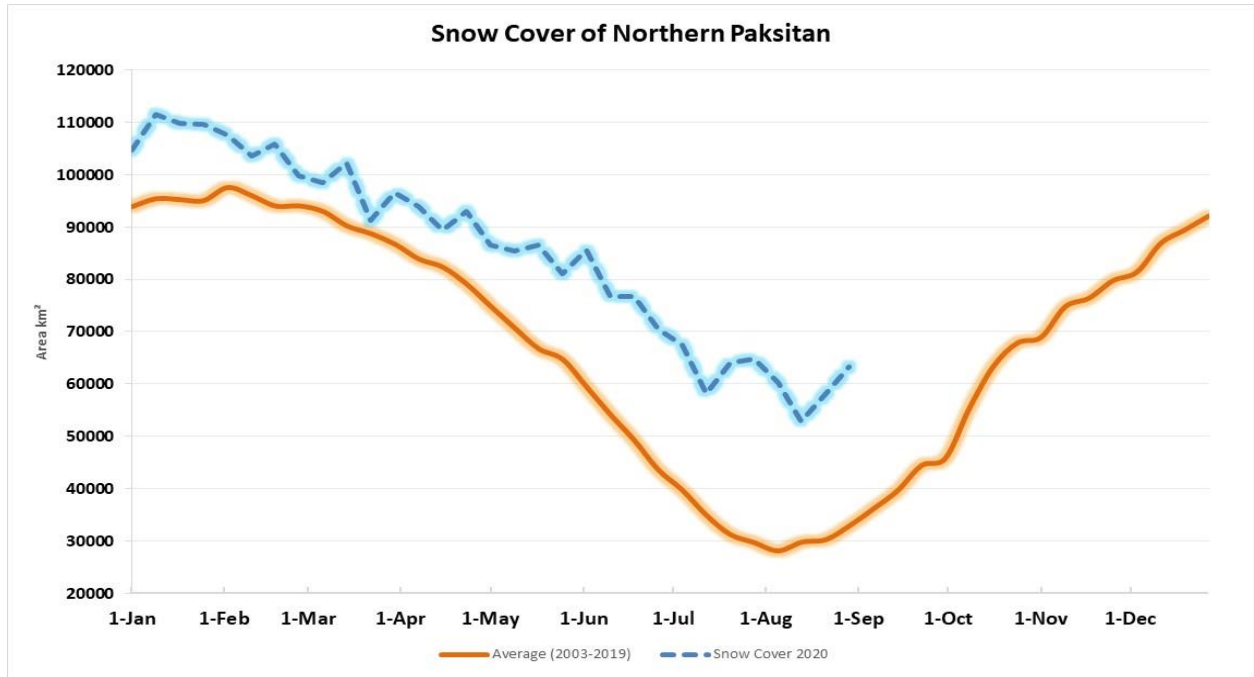
These graphs show the average area covered by snow in a given calendar year, based on an analysis of weekly satellite based snow cover maps. The area is measured in square km<sup>2</sup>. These data cover upper Indus basin in Northern Pakistan.



This graph shows annual average snow cover of Northern Pakistan from year 2019 to year 2020.

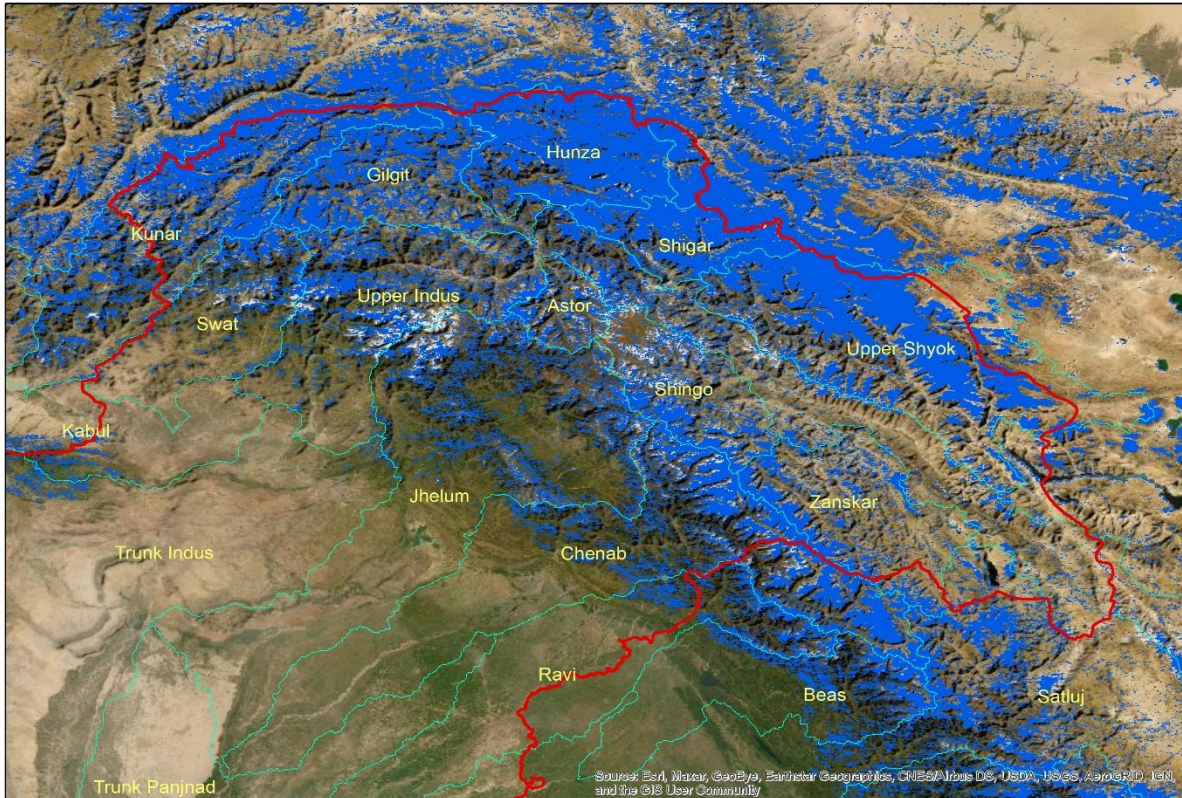


This graph shows weekly average (annual cycle) of Northern Pakistan from year 2003 to 2019.



This graph shows average snow cover from year 2003 to 2019, while blue line represents average snow cover of year 2020.

## Latest Snow Cover of Pakistan (14-Sep-2020)



This image shows the latest snow cover based on Modis 10A2 NDSI product.